

**O'REILLY-PEPIN RESIDENCE  
FIRST LEVEL FLOOR MATERIAL SELECTIONS**

Page 1

ITEM	DESCRIPTION	NOTES
<b>Entry Porch, Foyer &amp; Closet</b>	<b>Slate 12"</b> : MSI, California Gold Slate, 12"x 12". Install Square. <b>Grout</b> : Custom Building Products, #145 Light Smoke.	See Floor Material Plans for More Information.
<b>Steps Up From Foyer and Stairway Up</b>	<b>Wood Treads</b> : Custom Stair Nosing to Coordinate with Wood. <b>Slate Brick Risers</b> : MSI, California Gold Slate Brick Pattern, Tumbled (SMOT-Brick-CG) 12"x 12" Mesh Mount Sheets. Install Horizontal. <b>Grout</b> : Custom Building Products, #145 Light Smoke.	See Floor Material Plans for More Information.
<b>Powder Room</b>	<b>Slate 6" Tumbled</b> : MSI, California Gold Slate Tumbled 6"x 6". <b>Slate Brick Borders</b> : MSI, California Gold Slate Brick Pattern, Tumbled (SMOT-Brick-CG) 12"x 12" Mesh Mount. <b>Grout</b> : Custom Building Products, #145 Light Smoke.	See Floor Material Plans for More Information.
<b>Living Room</b>	<b>Wood Flooring</b> : Solid Hardwood Flooring Provided by Owner. Finish to Coordinate with Existing Wood. Install as Shown on Plan.	See Floor Material Plans for More Information.
<b>Dining Room</b>	<b>Wood Flooring</b> : Solid Hardwood Flooring Provided by Owner. Finish to Coordinate with Existing Wood. Install as Shown on Plan.	See Floor Material Plans for More Information.
<b>Kitchen</b>	<b>Wood Flooring</b> : Solid Hardwood Flooring Provided by Owner. Finish to Coordinate with Existing Wood. Install as Shown on Plan.	See Floor Material Plans for More Information.
<b>Pantry</b>	<b>Wood Flooring</b> : Solid Hardwood Flooring Provided by Owner. Finish to Coordinate with Existing Wood. Install as Shown on Plan.	See Floor Material Plans for More Information.
<b>Mud Room</b>	<b>Wood Flooring</b> : Solid Hardwood Flooring Provided by Owner. Finish to Coordinate with Existing Wood. Install as Shown on Plan.	See Floor Material Plans for More Information.
<b>Laundry</b>	<b>Travertine</b> : Travertine with Chiseled Edges Provided by Owner. In Versailles Pattern (Sizes: 8x8, 8x16, 16x16, & 16x24). <b>Grout</b> : Custom Building Products, #145 Light Smoke.	See Floor Material Plans for More Information.

NOTE: Provide Grouted Material for Owner's Review, Prior to Installation.

**O'REILLY-PEPIN RESIDENCE  
FIRST LEVEL FLOOR MATERIAL SELECTIONS**

Page 2

ITEM	DESCRIPTION	NOTES
<b>Master Bedroom</b>	<b>Carpet I:</b> Masland Carpet, Artistic Vision, Pattern: 9516, Color: 752 Rocky Road, Repeat: 24"w x 16"l, 12' Width. Over Recommended Pad.	See Floor Material Plans for More Information.
<b>Master Closet</b>	<b>Carpet I:</b> Masland Carpet, , Pattern: 9516 Artistic Vision, Color: 752 Rocky Road, Repeat: 24"w x 16"l, 12' Width. Over Recommended Pad.	See Floor Material Plans for More Information.
<b>Master Bath</b>	<b>Porcelain Tile:</b> MSI, Capella, Stable, 6"x 40"x 3/8" Thickness. Porcelain-Wood Look. Install as Shown on Plan. <b>Grout:</b> Custom Building Products, #145 Light Smoke.	See Floor Material Plans for More Information.
<b>Master Shower Floor</b>	See Master Bath Selections for Details.	See Floor Material Plans for More Information.

NOTE: Provide Grouted Material for Owner's Review, Prior to Installation.



**O'REILLY-PEPIN RESIDENCE  
BASEMENT LEVEL FLOOR MATERIAL SELECTIONS**

Page 3

ITEM	DESCRIPTION	NOTES
<b>Stairway Down</b>	<b>Carpet III:</b> Masland, Style Sense, 9517, Rocky Road 752. Stainmaster SolarMax Fiber.	See Floor Material Plans for More Information.
<b>Exercise/ Office</b>	<b>Carpet II:</b> Shaw Floors, Pattern: 8760DF Turner's Point , Color: 00445 Bay of Hope. 100% Nylon, 12' Wide.	See Floor Material Plans for More Information.
<b>Game Room</b>	<b>Carpet II:</b> Shaw Floors, Pattern: 8760DF Turner's Point , Color: 00445 Bay of Hope. 100% Nylon, 12' Wide.	See Floor Material Plans for More Information.
<b>Game Room Bath</b>	<b>Porcelain Tile:</b> MSI, Capella, Stable, 6"x 40"x 3/8" Thickness. Porcelain-Wood Look. Install as Shown on Plan. <b>Grout:</b> Custom Building Products, #145 Lt. Smoke	See Floor Material Plans for More Information.
<b>Game Room Bath Shower Floor</b>	See Game Room Bath Selections for Details.	See Floor Material Plans for More Information.

NOTE: Provide Grouted Material for Owner's Review, Prior to Installation.

O'REILLY-PEPIN RESIDENCE

SECOND LEVEL FLOOR MATERIAL SELECTIONS

Page 3

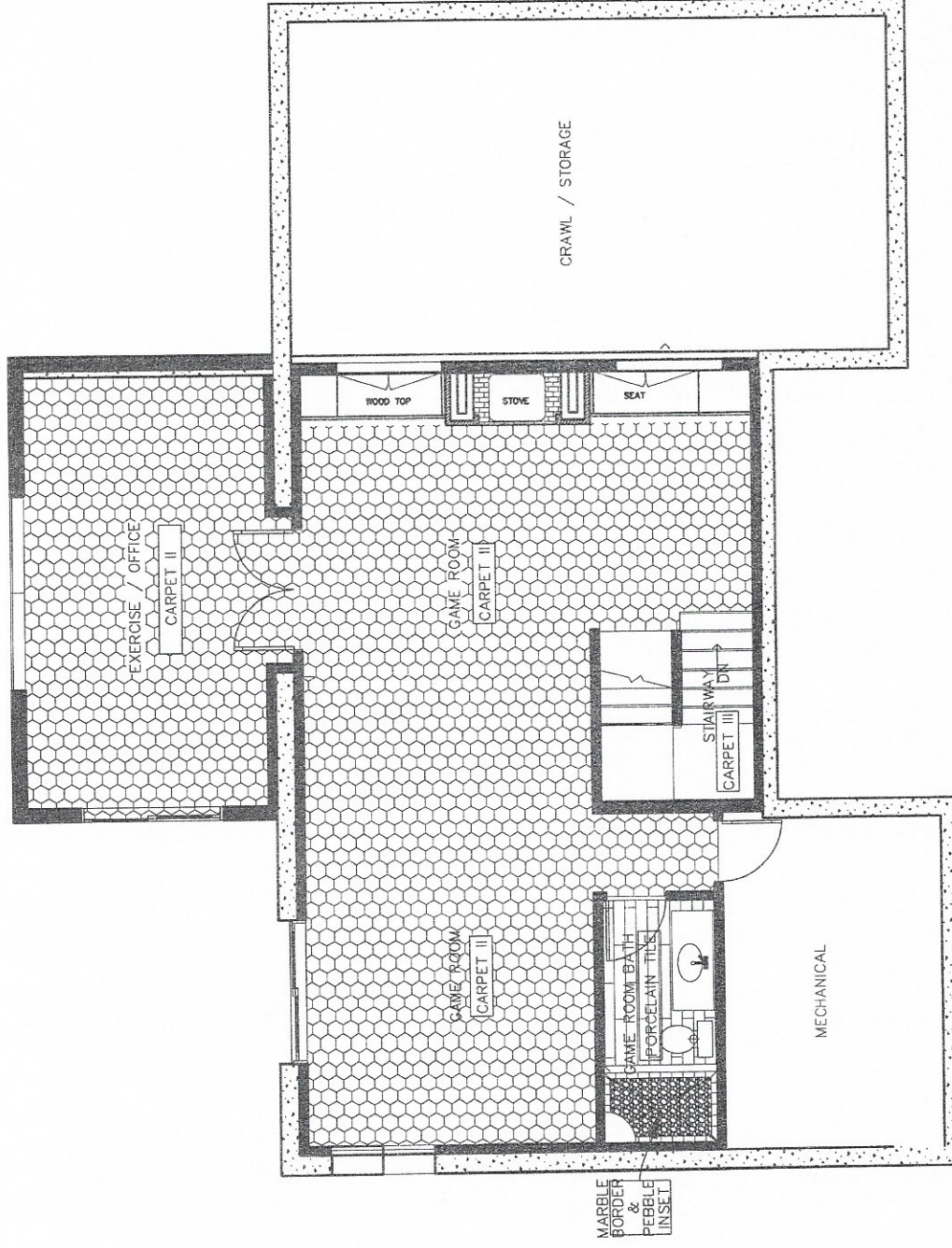
ITEM	DESCRIPTION	NOTES
Stairway Up and Loft	Carpet III: Masland, Style Sense, 9517, Rocky Road 752. Stainmaster SolarMax Fiber.	See Floor Material Plans for More Information.





# O'REILLY-PEPIN RESIDENCE BASEMENT MINI PLAN

AUGUST 2015



⊕ BASEMENT FLOOR PLAN

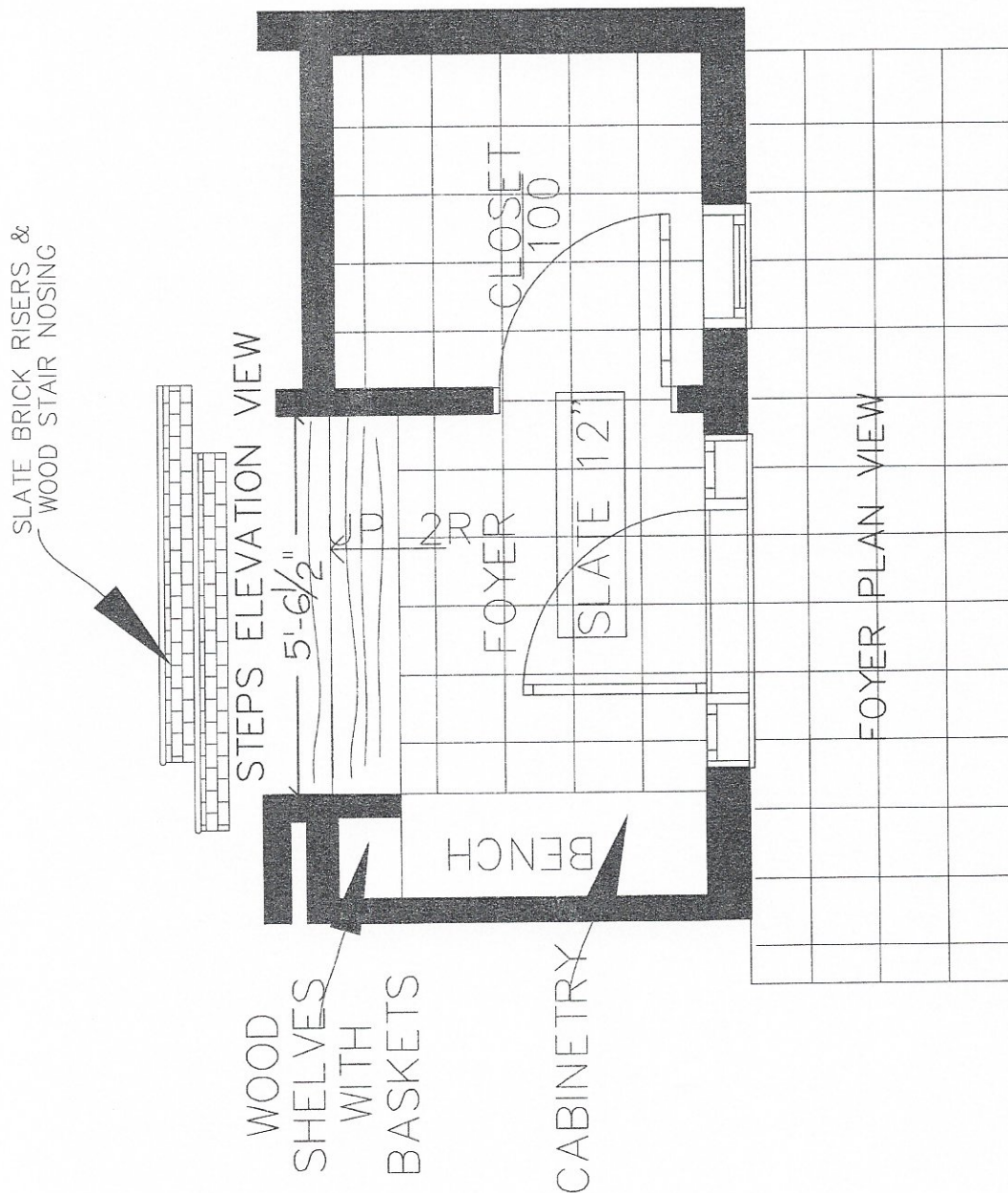
NOTE: ALL DIMENSIONS  
TO BE FIELD VERIFIED.  
TV SIZE TO BE  
DETERMINED.

SCALE: 1/8" = 1'-0"

DESIGN: *origins* LLC

# O'REILLY - PEPIN RESIDENCE FOYER PLAN AND STEPS

AUGUST 2015



NOTE: ALL DIMENSIONS  
TO BE FIELD VERIFIED.



## **O'REILLY-PEPIN RESIDENCE FIRST LEVEL FLOOR MATERIAL**



**Slate 12":** MSI, California Gold Slate, 12"x 12".



**Wood Flooring, Treads & Risers:** Solid Hardwood Flooring  
Provided by Owner. Finish to Coordinate with Existing Woods.



## O'REILLY-PEPIN RESIDENCE FIRST LEVEL FLOOR MATERIAL



**Slate 6" Tumbled:** MSI, California Gold Slate,  
Tumbled 6"x 6".



**#145 LIGHT SMOKE**

**Grout:** Custom Building  
Products, #145 Light Smoke.



**Travertine:** Travertine with Chiseled Edges  
Provided by Owner. In Versailles Pattern  
(Sizes: 8x8, 8x16, 16x16, 16x24).

**O'REILLY-PEPIN RESIDENCE  
FIRST LEVEL FLOOR MATERIAL**



**Carpet I:** Masland Carpet, Artistic Vision 9516, Rocky Road 752.



## O'REILLY-PEPIN RESIDENCE FIRST LEVEL FLOOR MATERIAL



**Porcelain Tile:** MSI, Capella, Stable,  
6"x 40"x 3/8" Thickness.



**#145 LIGHT SMOKE**

**Grout:** Custom Building  
Products, #145 Light Smoke.

**O'REILLY-PEPIN RESIDENCE  
BASEMENT FLOOR MATERIAL**



**Carpet II:** Shaw Floors, Turner's Point 876DF, Bay of Hope 0045.



**Carpet III:** Masland Carpet, Style Sense 9517, Rocky Road 752.



## O'REILLY-PEPIN RESIDENCE BASEMENT FLOOR MATERIAL



**Porcelain Tile:** MSI, Capella, Stable,  
6"x 40"x 3/8" Thickness.



**#145 LIGHT SMOKE**

**Grout:** Custom Building  
Products, #145 Light Smoke.